



Chattaway Street, Nechells
Birmingham, B7 5LN

Offers in the Region Of £105,000

Nechells

Offers in the Region Of £105,000



OFFERED FOR SALE WITH NO UPWARD CHAIN, this one bedroom first floor apartment benefits from being redressed throughout and would be an ideal first-time buyer or investor purchase.

Situated in a development of residential homes and apartments, the location is ideal for both arterial transport routes and proximity to Birmingham City centre and comprises a spacious lounge diner, fitted kitchen, large double bedroom and bathroom with full suite.

The property is available to view by appointment via Paul Carr Erdington. All viewings are for proceedable purchasers only.





Property Specification

THIS FIRST FLOOR MAISONETTE
WITH LEASE EXTENDED TO 10.04.2125
BRIEFLY COMPRISES;

Entrance and stairs to;

Lounge/Diner 4.44m (14'7") x 2.96m (9'9")

Kitchen 2.78m (9'1") x 2.34m (7'8")

Bedroom 4.44m (14'7") x 3.00m (9'10")

Bathroom

Agent's Note:

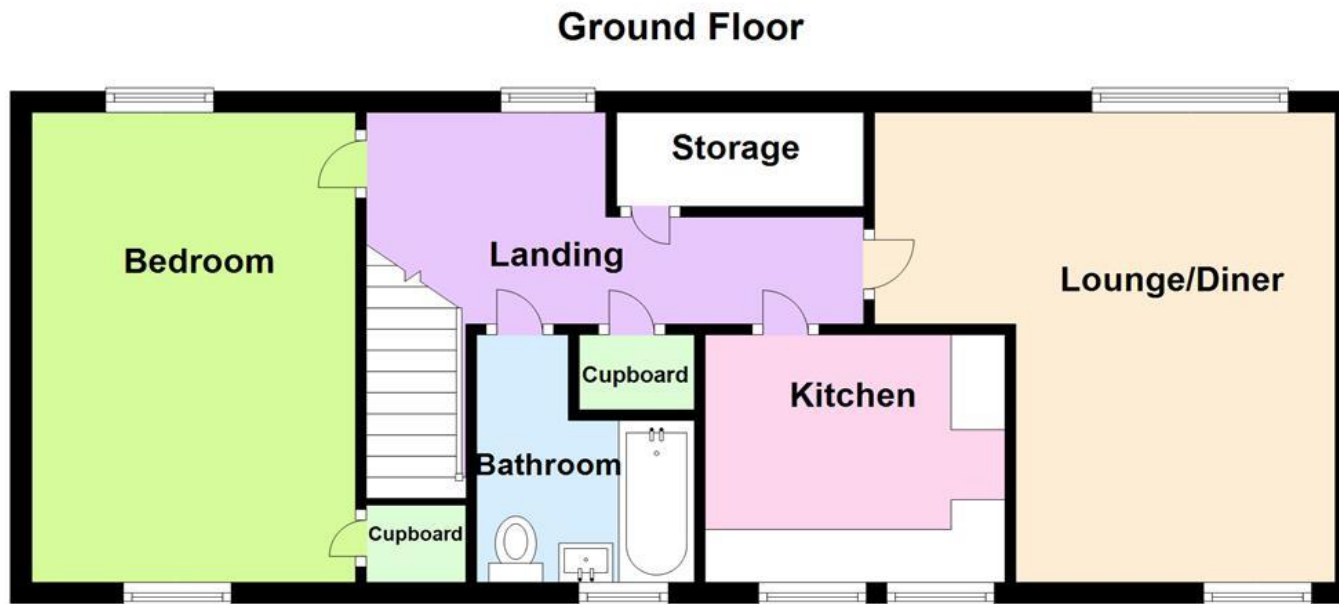
Every care has been taken with the preparation of these Sales Particulars but they are for general guidance only and complete accuracy cannot be guaranteed. If there is any point which is of particular importance, professional verification should be sought. The mention of any fixtures, fittings and/or appliances does not imply they are in full efficient working order as they have not been tested. All dimensions are approximate. Photographs are reproduced for general information and it cannot be inferred that any item shown is included in the sale. These Sales Particulars do not constitute a contract or part of a contract.
Came on the market: 16th September 2024

Viewer's Note:

Services connected: Gas, electric, water and drainage
Council tax band: A
Tenure: Leasehold
Ground Rent: £10 p.a.
Service Charge: £212 p.a.

Floor Plan

This floor plan is not drawn to scale and is for illustration purposes only



Energy Efficiency Rating

Score	Energy rating	Current	Potential
92+	A		
81-91	B		
69-80	C	73 C	75 C
55-68	D		
39-54	E		
21-38	F		
1-20	G		

Map Location

